

*Professional Services
Procurement Bulletin
2008-01
Floyd County*

COUNTY	<i>Foyd</i>
ROUTE	<i>CR 1962</i>
DISTRICT	<i>12-Pikeville</i>
ITEM NO	<i>12-1074.00</i>
PROJECT DESCRIPTION	<i>Replace Bridge over Right Fork Beaver Creek (C59) 300' West Jct. KY 7</i>
PROJECT MANAGER	<i>Robin T. Justice</i>
USER DIVISION	<i>Highway Design</i>
APPROXIMATE FEE	<i>\$90,000.00</i>
PROJECT FUNDING	<i>Federal Funds (BRZ)</i>
PURPOSE AND NEED	<i>Bridge over Right Fork Beaver Creek (C59) is Structurally Deficient. SR = 16.8</i>
PROJECT LENGTH	<i>0.1 mile</i>
METHOD OF DESIGN	<i>The selected consultant shall utilize the CADD Standards for Highway Plans (version 2.08) policy in the development of the Highway Plans.</i>
DBE REQUIREMENT	<i>None</i>

SCOPE	<i>The selected consultant will provide engineering services for preliminary and final roadway design, including any surveying, drainage design, right of way plans, construction plans, traffic control plans, erosion control and cost estimates.</i>
SPECIAL INSTRUCTIONS	<i>None</i>
AVAILABLE STUDIES	<i>None</i>
PHOTOGRAMMETRIC SERVICES	<i>The selected consultant will field survey the project.</i>
STRUCTURE DESIGN	<i>The selected consultant shall do the necessary engineering services to determine the preliminary sizes of the bridges and other drainage structures. Structure design will be performed by Department. Pre-qualification in the area of structure design is not required to be identified in the consultant's Response to Announcement.</i>
GEOTECHNICAL SERVICES	<i>Department</i>
TRAFFIC	<i>Traffic projections and related information will be provided by the Department.</i>
ENVIRONMENTAL	<i>The Department will prepare the appropriate environmental document.</i>
UTILITY DESIGN	<i>The Department will be responsible for coordinating any Utility design work..</i>
MAP	<i><u>Static Map</u></i> <i><u>Interactive Map</u></i>

PREQUALIFICATION REQUIREMENTS

<u>ROADWAY DESIGN</u>	<ul style="list-style-type: none"> <i>Rural Roadway Design <\$250,000</i> <i>Surveying</i>
------------------------------	---

PROJECT SCHEDULE & MILESTONES

<i>RESPONSE DATE</i>	<i>August 8, 2007 4:30 p.m. (Frankfort Time)</i>
<i>SELECTION COMMITTEE DATE MEETING</i>	<i>September 5, 2007</i>
<i>PRE-DESIGN CONFERENCE</i>	<i>September 17 2007</i>
<i>TENTATIVE DEADLINE FOR CONSULTANT FEE PROPOSAL</i>	<i>October 15, 2007</i>
<i>CONTRACT NEGOTIATIONS</i>	<i>November 5, 2007</i>
<i>NOTICE TO PROCEED</i>	<i>January 7, 2008</i>
<i>PRELIMINARY LINE & GRADE INSPECTION</i>	<i>August 1, 2008</i>
<i>JOINT INSPECTION</i>	<i>September 1, 2008</i>
<i>RIGHT OF WAY PLANS</i>	<i>December 1, 2008</i>
<i>FINAL PLANS</i>	<i>June 1, 2009</i>

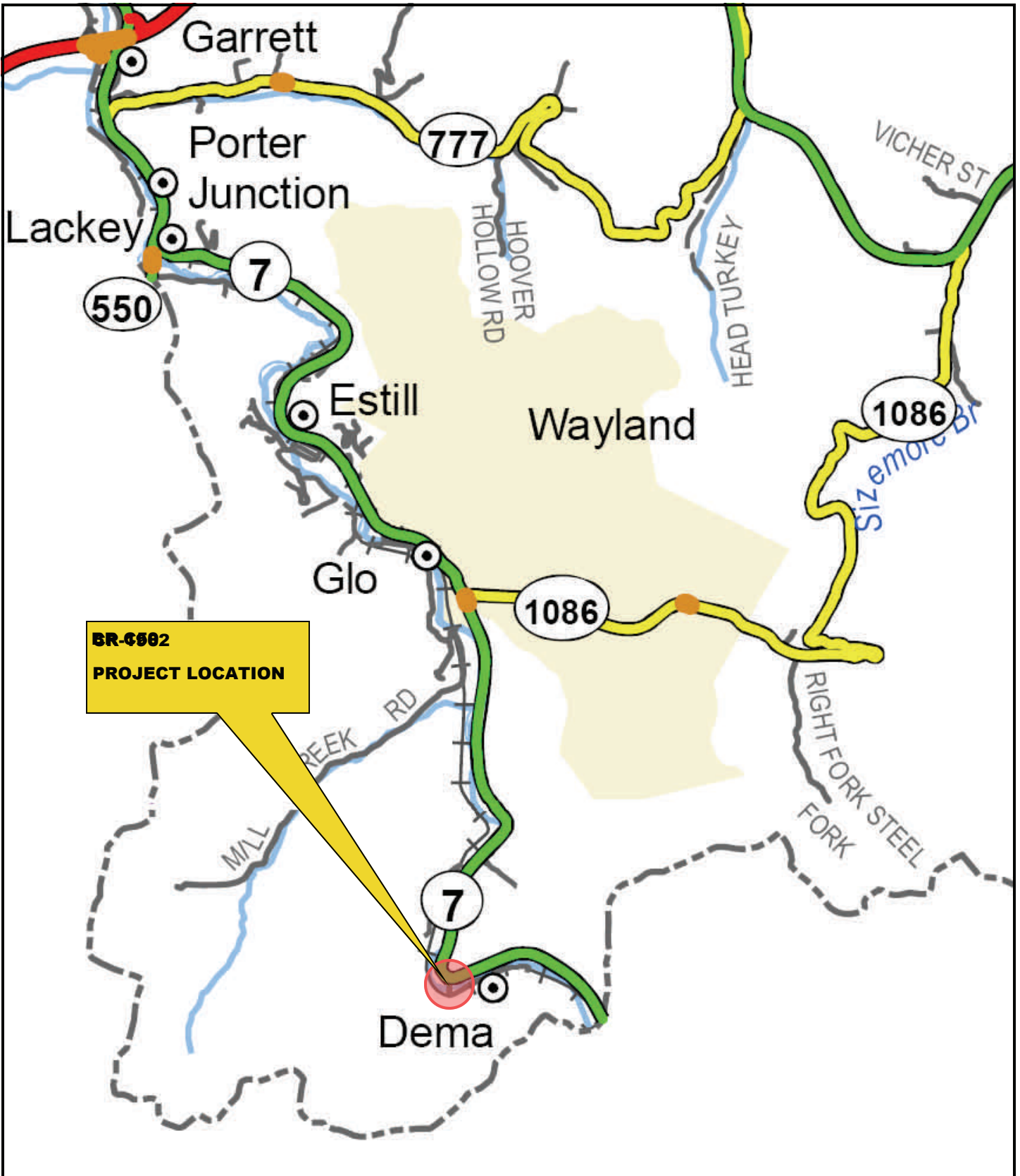
The selected consultant is expected to meet the scheduled milestone dates

EVALUATION FACTORS

- 1. Relative experience of consultant personnel assigned to project team with highway projects for KYTC and/or for federal, local or other state governmental agencies. (10 points)*
 - 2. Capacity to comply with project schedule. (10 points)*
 - 3. Past record of performance on projects of similar type and complexity. (10 points)*
 - 4. Project approach and proposed procedures to accomplish the services for the project. (10 points)*
 - 5. Consultant's Kentucky office where work is to be performed. (2 points)*
- 75% - 100% of work accomplished in Kentucky offices - 2 points*
- 26% - 74% of work accomplished in Kentucky offices - 1 point*
- 0% - 25% of work accomplished in Kentucky offices - 0 points*

SELECTION COMMITTEE MEMBERS

- 1. Kevin Damron, P.E., User Division*
- 2. Brad Eldridge, P.E., User Division*
- 3. Ted Merryman, Secretary's Pool*
- 4. Ed McCracken, Secretary's Pool*
- 5. George Blandford, Governor's Pool*

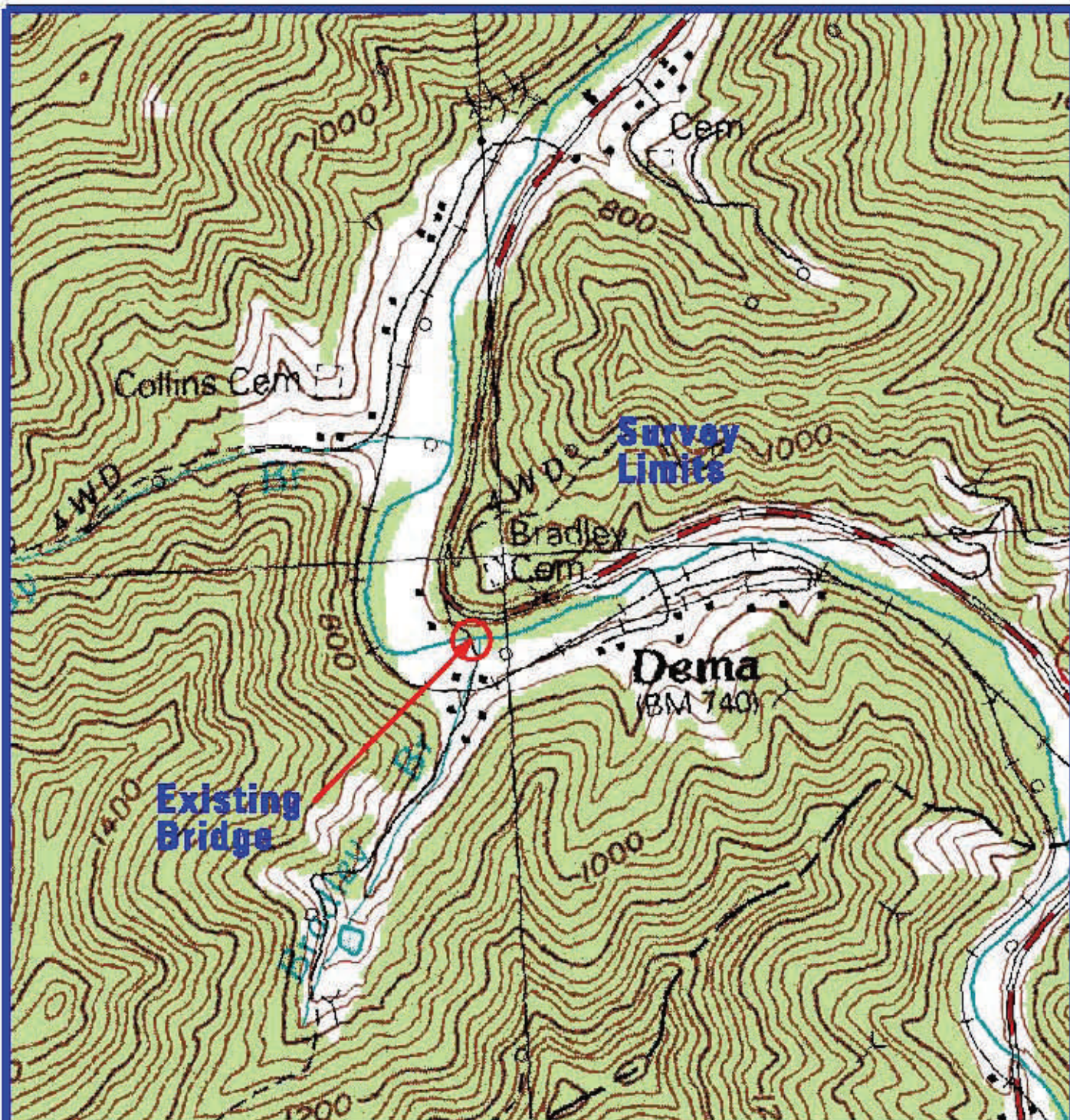


Replace Bridge over Right Fork Beaver Creek (C59)

300' West Jct. KY 7 on CR 1962

Item 12-1074.00





Floyd Co. 12-1074
Replace Bridge Over Right Fork Beaver Creek (C59)
300' West JCT. KY-7 on CR-1962
Near Dema
Wayland Quad

SCALE
1" = 800'